



Trading Places



32 Albany Gardens , Whitley Bay, NE26 2DY

***TO LET** TWO BEDROOM**FIRST FLOOR FLAT**OPEN PLAN LOUNGE AND KITCHEN**CENTRAL TOWN LOCATION**CLOSE TO SEA FRONT**

Trading Places welcome to the market FOR RENT this well presented two bedroom first floor flat on Albany Gardens in Whitley Bay. The property offers an open plan lounge and kitchen with modern units, two bedrooms, and a bathroom/WC. Located just a short walk away from the sea front and close to the town centre for a good selection of shopping facilities, amenities and transport links and metro links for commuting into Newcastle and other coastal towns. The property benefits from double glazing and gas central heating.

Please call our branch on 0191-2511189 to arrange an appointment.
EPC Rating C. Council Tax Band A --- Available from the 16th of June 2023

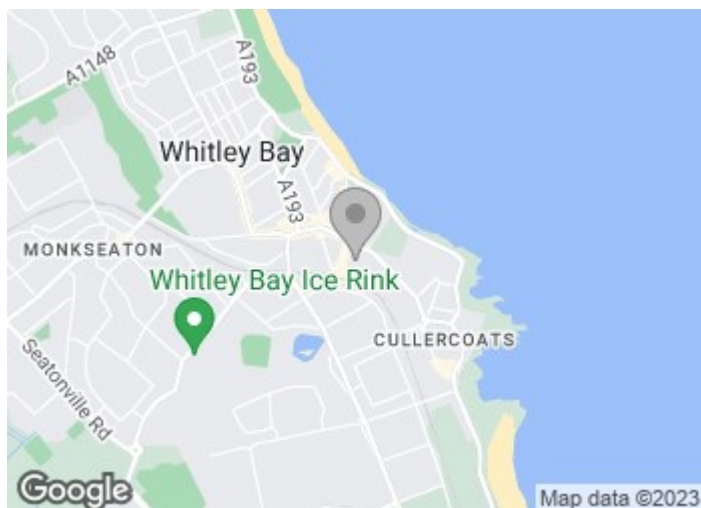
£625 PCM

32 Albany Gardens

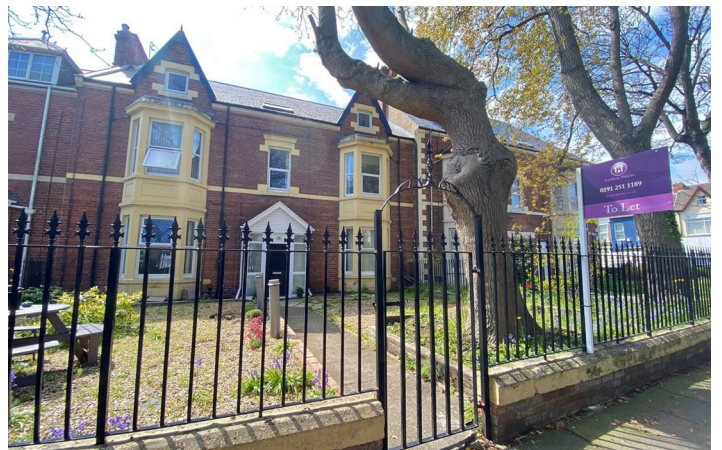
, Whitley Bay, NE26 2DY



- TO LET
- TWO BEDROOMS
- PEDESTRIANISED STREET
- FIRST FLOOR FLAT
- OPEN LOUNGE AND KITCHEN
- CENTRAL TOWN LOCATION
- UNFURNISHED
- BATHROOM/WC



[Directions](#)



These particulars, whilst believed to be accurate are set out as a general outline only for guidance and do not constitute any part of an offer or contract. Intending purchasers should not rely on them as statements of representation of fact, but must satisfy themselves by inspection or otherwise as to their accuracy. No person in this firms employment has the authority to make or give any representation or warranty in respect of the property.

